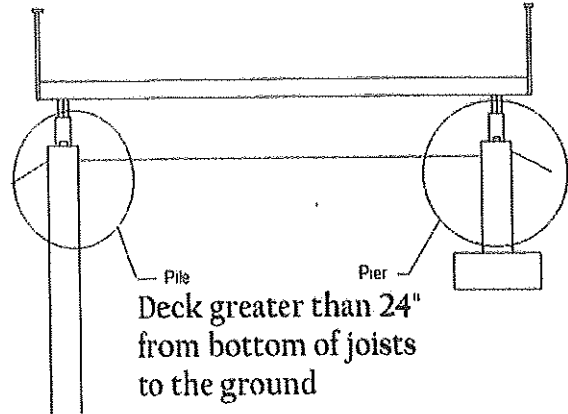


## Deck Requirements Open with a Roof or Cover

**Submit:**

**1. Deck Form or drawings that include the following items below:**

- Deck size all dimensions
- Post, spacing, type, size and material
- Beam material, size and plies
- Pile, pad or pier designs and spacing
- Joist material, size and spacing
- Railing type, height and details
- Decking material
- Height deck is off the ground
- Stair details rise and run
- Roof Truss System
- Roof Beams, & connection to the house
- Roof Rafter Designs if not Trusses



**Hand built trusses are not allowed. If rafter framing you must meet the requirements under NBC 9.23.13 "Roof and Ceiling Framing"**

**Foundations:**

Decks supporting a roof, (greater than 32 sq. ft. **and** over 2' from the ground to the underside of the joists) require a foundation below frost.

- It must support 1.9kPa (40 lbs. per sq. ft.).
- Foundation can be a pile, a pier or engineered
- Piles must be a minimum of 8" x 8" for decks **up to** 100 sq. ft.
- Piles must be a minimum of 12" x 12" for decks **greater** than 100 sq. ft. **and/or supporting a roof**
- Piers must have a minimum of 24 x 24 x 6" footing and a 12" round column
- Piers must extend below frost 1.2M (4')
- Posts for the deck must be secured with X-bracing to prevent racking
- You must have access to the underside of deck if it requires leveling

Suggested Spans	Type	2x6	2x8	2x10
	Joist span 16" o/c		9'-4"	12'-4"
Joist span 24" o/c		8'-2"	10'-9"	13'-6"
Max Cantilever Joist		12"	16"	24"
2-ply beam span joist length 8'		6'-6"	8'-6"	10'-0"
2-ply beam span joist length 10'		6'-0"	8'-0"	9'-6"
2-ply beam span joist length 12'		5'-6"	7'-0"	8'-0"
3-ply beam span joist length 8'			10'-0"	13'-0"
3-ply beam span joist length 10'			9'-6"	11'-6"
3-ply beam span joist length 12'			8'-6"	10'-0"
Maximum Cantilever Beams		1'-0"	1'-6"	2'-0"

# Covered Deck Worksheet

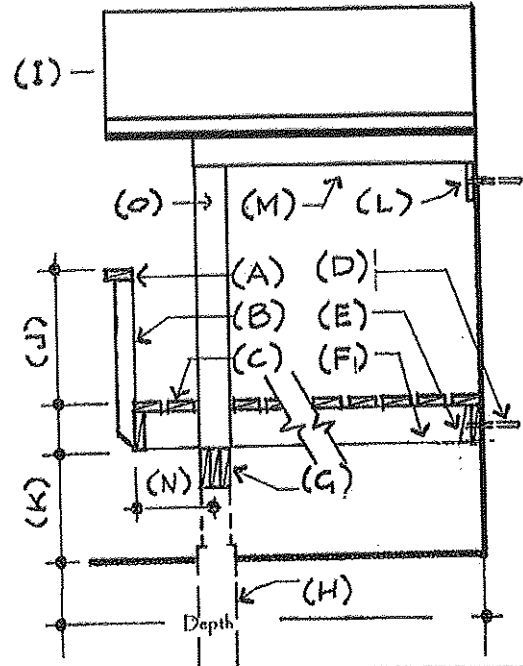
**Form#  
2010-040**

Information	Name	
	Address	
	Phone#	
	Email	

SIZE	Deck A	Width		Depth	
	Deck B	Width		Depth	
	Deck C	Width		Depth	

**NOTES:**

- If your deck has multiple sizes and/or levels provide detailed drawings.
- Beams must be nailed together, set on top of the posts & secured with a metal bracket
- Decks Greater than 24" from ground and greater than 32 sq. ft. require Piles or Piers (H)
- Piles for decks supporting a roof be 12" x 12"



Area	Item	Description (fill in below)	
Deck Details	A	Railing Type: e.g.: Spindle, Glass, Metal:	
	B	Spacing between Balusters or edge of glass:	Maximum spacing 4" (100mm) on center
	J	Railing Height: 36", if > 6' above ground 42":	
	C	Decking Type: e.g.: 2x6, 5/4 treated, Vinyl,:	
	D	Anchorage to the house or foundation:	Require 1/2" Bolts or lags 32" on center or better
	E	Joist hangers: Are Required:	Unless joists have 1 1/2 solid bearing below
	F	Joist Type: e.g. 2x6, 2x8 2x10, Spruce or Fir:	
	G(deck)	Beam Type: e.g. 2x6, 2x8 2x10, Spruce or Fir:	
	G(deck)	Beam Plies: 2-ply, 3-ply 1-ply not allowed:	
	M(roof)	Beam Type: e.g. 2x6, 2x8 2x10, Spruce or Fir:	
	M(roof)	Beam Plies: 2-ply, 3-ply 1-ply not allowed:	
	L	Attachment of roof to the Existing house:	
	N	Maximum Cantilever: Joists and Beams:	
	O	Post type (minimum post size is 6x6 for roof):	
	O	Spacing between Posts: e.g. 8'0":	
	K	Height bottom of joists to the ground:	
	H	PIERS: Pier Type: e.g. 12" Concrete:	
	H	PIERS: Depth of Pier: minimum 48":	
H	PIERS: Pad Size: e.g. 24x24x6":		
H	PILES: Pile size and depth (see note below):		
H	PILES: Screw Piles: Type, Depth and Brand:		
I	Roof System: e.g. Roof Trusses 24" o/c:		
I	Rafters: Type, Size, Spacing e.g. 2x4@24"o/c:		