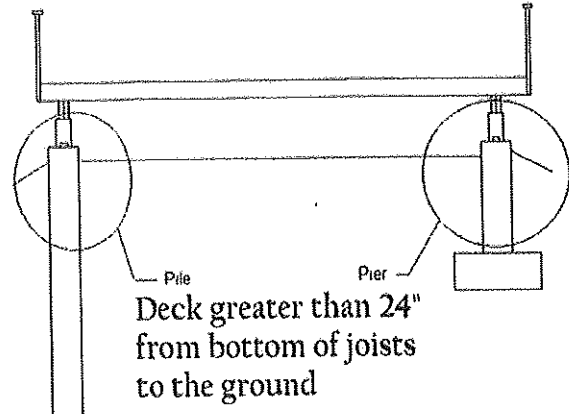


Deck Requirements Open without Roof or Cover

Submit:

1. Deck Form or drawings that include the following items below:

- Deck size all dimensions
- Post, spacing, type, size and material
- Beam material, size and plies
- Pile, pad or pier designs and spacing
- Joist material, size and spacing
- Railing type, height and details
- Decking material
- Height deck is off the ground
- Stair details rise and run



Foundations:

Decks supporting a roof, (greater than 32 sq. ft. and over 2' from the ground to the underside of the joists) require a foundation below frost.

- It must support 1.9kPa (40 lbs. per sq. ft.).
- Foundation can be a pile, a pier or engineered
- Piles must be a minimum of 8" x 8' for decks up to 100 sq. ft.
- Piles must be a minimum of 12" x 12' for decks greater than 100 sq. ft. and/or supporting a roof
- Piers must have a minimum of 24 x 24 x 6" footing and a 12" round column
- Piers must extend below frost 1.2M (4')
- Posts for the deck must be secured with X-bracing to prevent racking
- You must have access to the underside of deck if it requires leveling

Suggested Spans Beams, Joists and Cantilevers:

Type	2x6	2x8	2x10
Joist span 16" o/c	9'-4"	12'-4"	14'-6"
Joist span 24" o/c	8'-2"	10'-9"	13'-6"
Max Cantilever Joist	12"	16"	24"
2-ply beam span joist length 8'	6'-6"	8'-6"	10'0"
2-ply beam span joist length 10'	6'-0"	8'-0"	9'-6"
2-ply beam span joist length 12'	5'-6"	7'-0"	8'-0"
3-ply beam span joist length 8'		10'-0"	13'0"
3-ply beam span joist length 10'		9'-6"	11'-6"
3-ply beam span joist length 12'		8'-6"	10'-0"
Maximum Cantilever Beams	1'-0"	1'-6"	2'-0"

Deck Worksheet

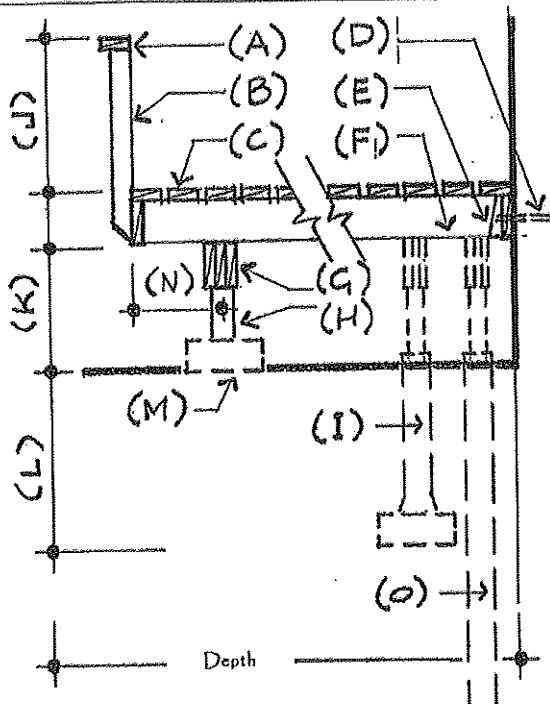
**Form#
2010-041**

INFORMATION	Name	
	Address	
	Phone#	
	Email	

SIZE	Deck A	Width		Depth	
	Deck B	Width		Depth	
	Deck C	Width		Depth	

NOTES:

- Decks greater than 24" off ground and/or greater than 32 sq. ft. must have piles or piers.
- Piles for decks under 100 sq. ft. must be 8" x 8' over 100 sq. ft. 12" x 12'
- If your deck has multiple sizes and/or levels provide detailed drawings.
- Beams must be nailed together, set on top of the posts & secured with a metal bracket
- Piers must be a minimum of 48" deep and have a pad



	Item	Description (fill in below)	
Deck Details	A	Railing Type: e.g.: Spindle, Glass, Metal:	
	B	Spacing between Balusters or edge of glass:	Maximum spacing 4" (100mm) on center
	J	Railing Height: 36", if > 6' above ground 42":	
	C	Decking Type: e.g.: 2x6, 5/4 treated, Vinyl:	
	D	Anchorage to the house or foundation:	Require 1/2" Bolts or lags 32" on center or better
	E	Joist hangers: Are Required:	Unless joists have 1 1/2 solid bearing below
	F	Joist Type: e.g. 2x6, 2x8 2x10, Spruce or Fir:	
	G	Beam Type: e.g. 2x6, 2x8 2x10, Spruce or Fir:	
	G	Beam Plies: 2-ply, 3-ply 1-ply not allowed:	
	N	Cantilever length: Joists and Beams:	Maximum: 2x6-12"; 2x8-16"; 2x10-24"
	H	Post type, Size, Type e.g. 6"x6" Treated:	
	H	Spacing between Posts: e.g. 8'0":	
	K	Height bottom of joists to the ground:	
	I	PIERS: Pier Type: e.g. 12" Concrete:	
	L	PIERS: Depth of Pier: minimum 48":	
M (I)	Pad Size: Ground Level or Piers:		
O	PILES: Pile size and depth (see note above):		
O	PILES: Screw Piles: Type, Depth and Brand:		